

THINKWARETM
DASH CAM

Thinkware Dash Cam Solutions

Powered by



ECHOMASTER

THINKWARETM
DASH CAM

CAPTURE EVERYTHING

Advanced Video Recording Protection

- Monitor & Record Driving Incidents
- Quality Night Vision
- Parking Surveillance Mode



THINKWARETM
DASH CAM

GM Dash Cam Solutions

Everything you need to install a Thinkware Dash Cam into your General Motors Vehicle

2 Channel Windshield Mount DVR with Interior Rear Facing Camera
16GB SD and OBD II T-Harness

Part #: 19418274

Premium 2 Channel Windshield Mount DVR with Interior Rear Facing Camera
32GB SD, ADAS, and OBD II T-Harness

Part #: 19418275



THINKWARETM DASH CAM

Dash Cam Comparison



19418275



19418274

Front Camera	Full HD (1920 x 1080)	Full HD (1920 x 1080)
Rear Camera	Full HD (1920 x 1080)	HD (1280 x 720)
Viewing Angle	140 degrees	140 degrees
Wi-Fi	Yes	Yes
Thinkware Cloud/Parental Control	Yes	No
Mobile App - Android/iOS	Yes	Yes
Super Night Vision	Yes	No
SD Card Included	32GB	16GB
GPS	Yes	No
Speed/Red Light Camera Alert	Yes	No
Parking Mode	Yes	Yes
LDWS (Lane Departure Warning System)	Yes	No
FCWS (Forward Collision Warning System)	Yes	No
FVDW (Front Vehicle Departure Warning)	Yes	No

Parking Surveillance Mode*



Impact Detection

Captures impacts caused to the vehicle such as hit-and-runs while you are away



Motion Detection

Captures events detected by motion such as potential vandalism attempts

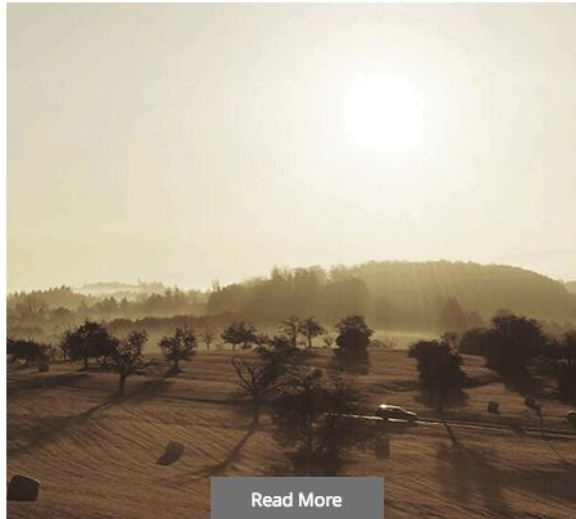


Energy Saving Mode

Extends coverage duration exponentially by keeping the dash cam in a power-saving mode during inactivity.

THINKWARETM DASH CAM

Reliability Features



[Read More](#)

Integrated Thermal Protection

The integrated Super Capacitors and Thermal Sensor provide added safety and reliability in extreme temperatures.



[Read More](#)

Anti-File Corruption

THINKWARE's proprietary Anti-File Corruption Technology improves your Dash Cam's reliability by protecting your memory card from data corruption and lost footage.

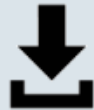
THINKWARETM DASH CAM

PC Viewer

With an intuitive and simple-to-use interface,
the THINKWARE PC Viewer enables seamless playback and video file organization.



Review your footage on a compatible Windows or Mac OS computer.



Save video files to your computer and share your driving memories.



View the GPS data (speed, time, and location) embedded into your video.



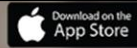
Configure all dash cam settings from one easy-to-use software.

THINKWARETM DASH CAM

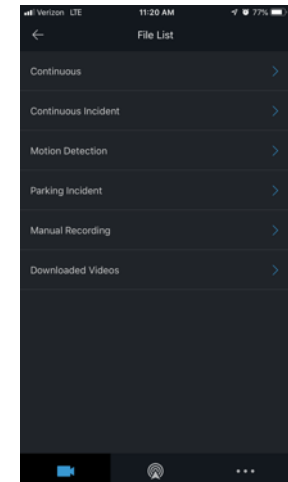
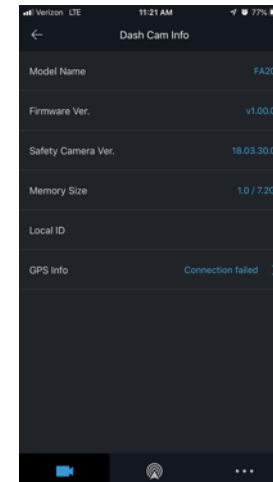
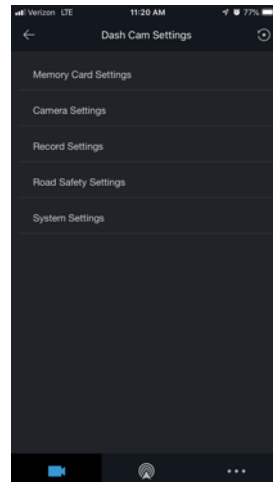
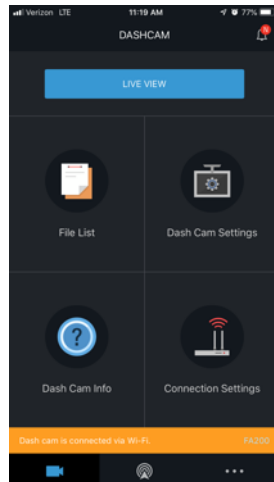
Mobile Viewer

Convenient control, efficient video download and real-time view all through one app. Get it **Free** now.

19418274 & 19418275

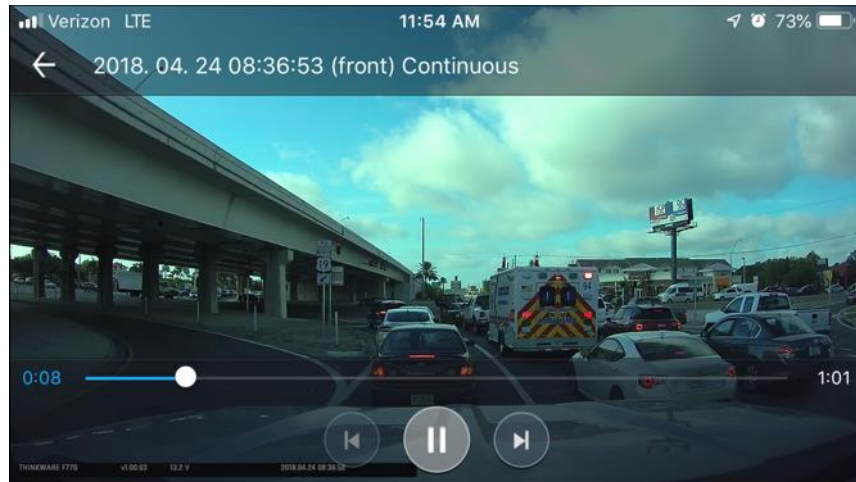


Easy To Use Smartphone App Allows Full Control And Configurability By User



THINKWARETM DASH CAM

Smartphone app allows events to be instantly downloaded from DVR to smartphone without the need to remove SD card from machine instantly allowing you to upload to social media or your insurance company



THINKWARETM DASH CAM

19418274

2 Channel Windshield Mount DVR with Interior Rear Facing Camera, 16GB SD, and OBD II T-Harness

This is an all-around economical dash cam - designed with utmost discreetness in mind, while jam-packed with features such as built-in Wi-Fi and Advanced Parking Mode. The sleek and compact dash cam offers 2-channel recording and is smartphone app controlled.



Kit Includes:

- HWK-TW01-HAR - OBD II Plug-n-Play Thinkware Harness
- Forward Facing Camera - Thinkware DC-M1-FG
- Rear facing Camera
- Connection Cable From Front to Rear Camera
- IGN-3F Ignition Module
- Windshield Mount for Front Facing Camera
- Micro SD Memory Card with Adapter
- 2 x 14" Wire Ties
- 2 x #8 Self Tapping Stinger Head Screws

THINKWARETM DASH CAM

19418274

- **Resolution :**

Front : 1080p Full HD

Rear : 720p [Optional]

- **Camera :** 2.1MP CMOS

- **Frame Rate :** up to 30 fps

- **Viewing Angle :** 140° (Diagonal)

- **Dimensions(WxDxH) :** 3.9 x 0.9 X 1.3 inch

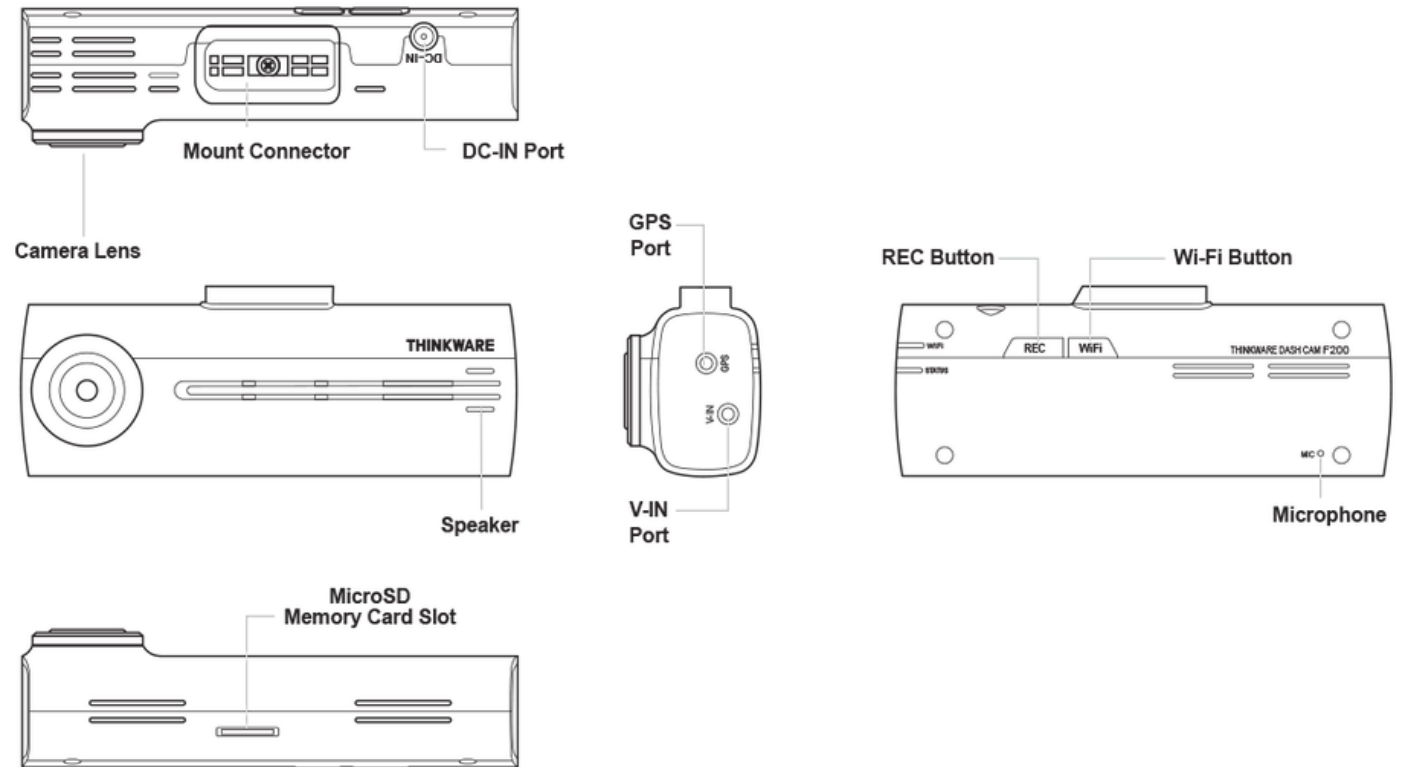
- **Weight :** 55g (0.121 lb)

- **Storage Temperature :** -4°~ 158°F / -20°~ 70°C

- **Operating Temperature :** 14°~ 140°F / -10°~ 60°C

- **Capacity :** MicroSD card 8/16/32/64GB (UHS-I)

- **Input Power :** DC 12/24V, Built-in Super Capacitor



19418274 Record Time

	Continuous Recording Priority (Type A)		Incident Recording Priority (Type B)		Parking Recording Priority (Type C)		Manual Recording Priority (Type D)		Driving Recording Only (Type E)	
Recording Type	Files Stored	File Time (Minutes)	Files Stored	File Time (Minutes)	Files Stored	File Time (Minutes)	Files Stored	File Time (Minutes)	Files Stored	File Time (Minutes)
<i>Continuous Recording</i>	60	60	43	43	33	33	33	33	78	78
<i>Event Recording</i>	23	7	40	13	19	6	29	9	19	6
<i>Manual Recording</i>	8	8	16	16	8	8	38	38	8	8
<i>Motion Recording</i>	46	15	44	14	19	6	19	6	0	0
<i>Parking Recording</i>	19	6	54	18	160	53	19	6	0	0

*Default Type is Type A - Type A, Type B, Type C, Type D and Type E are options selectable by user

THINKWARETM DASH CAM

19418275

Premium 2 Channel Windshield Mount DVR with Interior Rear Facing Camera, 32GB SD, ADAS, and OBD II T-Harness

This Dash Cam brings next-generation technology. With the premium Sony STARVIS CMOS Sensor that provides flawless recording quality with Super Night Vision, coupled with the new Energy-Saving Parking Surveillance Mode that extends coverage duration exponentially, this Dash Cam is leading the charge in pushing automotive technology to the next level.



Kit Includes:

- HWK-TW01-HAR - OBD II Plug-n-Play Thinkware Harness
- Forward Facing Camera - Thinkware DC-H1-FG
- Interior Rear Facing Camera
- Connection Cable From Front to Rear Camera
- IGN-3F Ignition Module & Micro SD Memory Card
- Windshield Mount for Front Facing Camera
- 2 x 14" Wire Ties
- 2 x #8 Self Tapping Stinger Head Screws

THINKWARETM DASH CAM

19418275

- **Resolution :**

Front - 1080p Full HD

Rear - 1080p Full HD [Optional]

- **Camera :**

Front - 2.13MP Sony Exmor STARVIS

Rear - 2.13MP Sony Exmor STARVIS [Optional]

- **Frame Rate :** 30 fps

- **Viewing Angle :** 140° (Diagonal)

- **Dimensions(WxDxH) :** 4.2 x 1.3 X 2.4 inch

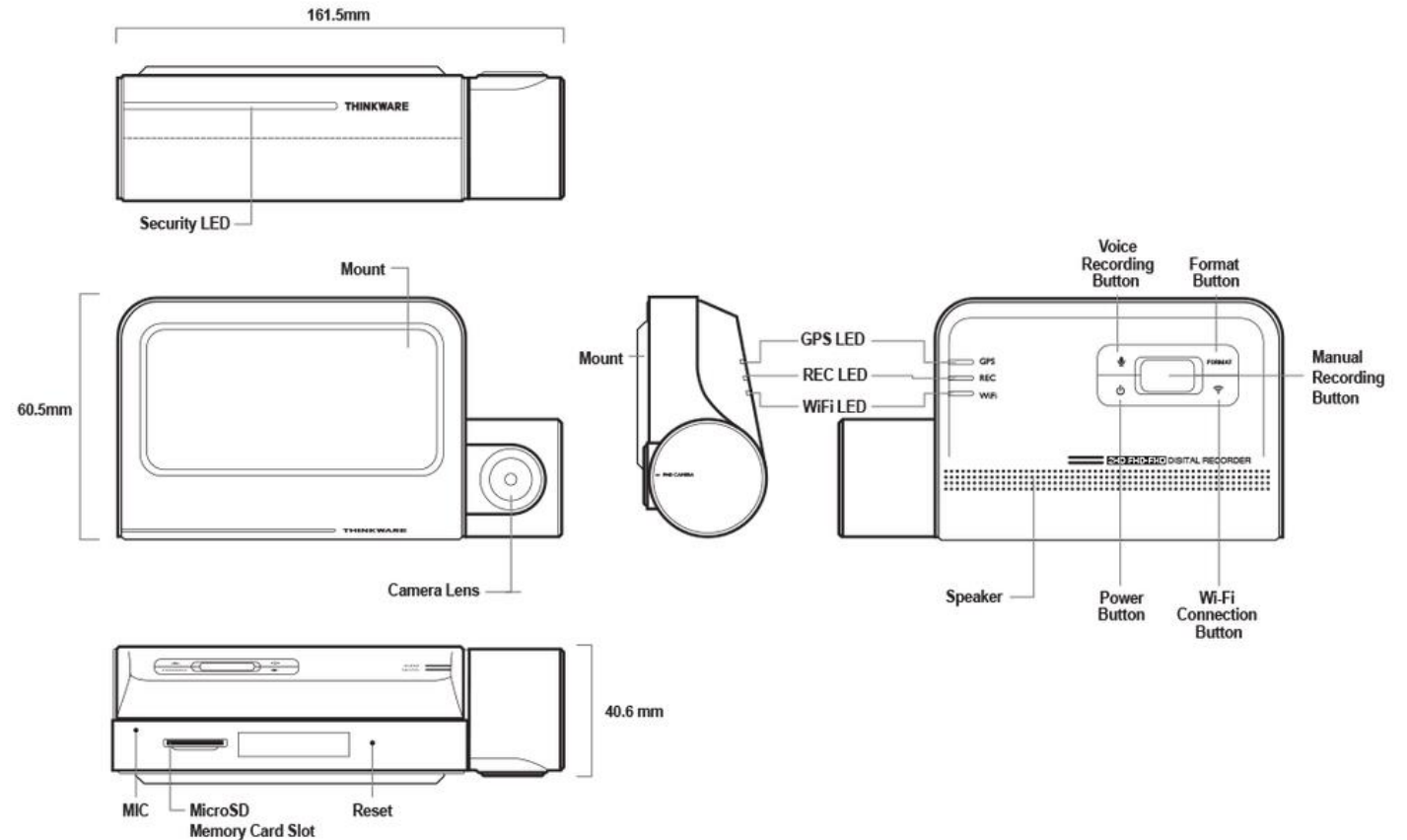
- **Weight :** 107.5g (0.237 lb)

- **Storage Temperature :** -4°~ 158°F / -20°~ 70°C

- **Operating Temperature :** 14°~ 140°F / -10°~ 60°C

- **Capacity :** MicroSD card 32/64/128GB (UHS-I)

- **Input Power :** DC 12/24V, Built-in Super Capacitor



19418275 Record Time

	Continuous Recording Priority (Type A)		Incident Recording Priority (Type B)		Parking Recording Priority (Type C)		Manual Recording Priority (Type D)	
Recording Type	Files Stored	File Time (Minutes)	Files Stored	File Time (Minutes)	Files Stored	File Time (Minutes)	Files Stored	File Time (Minutes)
<i>Continuous Recording</i>	123	123	88	88	68	68	68	68
<i>Event Recording</i>	47	15	82	27	39	13	59	19
<i>Manual Recording</i>	16	16	16	16	16	16	78	78
<i>Motion Recording</i>	39	13	90	30	39	13	39	13
<i>Parking Recording</i>	94	31	110	36	326	108	39	13

*Default Type is Type A - Type A, Type B, Type C, and Type D are options selectable by user



Solutions for General Motors

Intelligent Towing with Intellihaul

- Factory Matched Plastics
- Plug-n-Play Harnessing
- Customizable Safety Camera Solutions
- Engineered Integration Module
- GUI for Camera Management

iSimple Cables

- Automotive Grade Charging Cables
- Solutions for USB to Micro USB, Lightning, USB-C
- Indestructible Design

Technical Support

- Installation Trainings
- Dedicated Tech Support by Phone or Email